



UNITED SALES ASSOCIATES

PUBLIC SAFETY PRODUCTS CATALOG



www.accutest.net



www.capitalsafety.com



www.fsinorth.com



www.jacksonsafety.com



www.justritemfg.com



www.mapaglove.com



www.lakeland.com



www.safelifecorp.com



www.stardustabsorbent.com



www.wellslamontindustry.com

Presented by United Sales Associates, Manufacturers' Agents representing leading manufacturers of industrial safety products in the safety, industrial, construction, sanitary maintenance, and public safety markets in the states of Ohio, Michigan, West Virginia, Indiana, Kentucky, Tennessee, Pennsylvania, and New York
Our products are sold through authorized distributors.



7537 State Road, Cincinnati, OH 45255-2438
Ph: 1-800-837-4266 • Fax: 513-231-1456
Web: www.unitedsales.com • E-mail: assocs@unitedsales.com

Branches: Cincinnati, Cleveland, Louisville, Union, KY, Indianapolis, Buffalo, Nashville, and Grand Rapids

**FOR MORE INFORMATION - CONTACT UNITED SALES ASSOCIATES
PH: 1-800-837-4266 * E-MAIL: assocs@unitedsales.com**

EMERGENCY RESPONSE * EMERGENCY RESPONSE * EMERGENCY RESPONSE



HAZMAT DECONTAMINATION SHOWER SYSTEMS, SHELTERS AND ACCESSORIES PORTABLE * FIXED * MOBILE

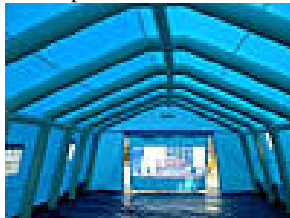
INFLATABLE, PORTABLE HAZMAT DECON SHOWER SYSTEMS AND SHELTERS

- Available in all sizes from one-person units to mass casualties units.
- Designed with nothing to assemble.
- Can be fully inflated and operable via connection to an outside water supply in minutes.
- Standard colors: EMS Blue, Green and White (*other colors at extra cost*).
- Seams are quadruple overlapped and glued to prevent leaking.
- Fabric materials (roof and sides) are polyurethane on polyester making them very chemical and UV resistant.
- Air chambers are polyester fabric coated with PVC on both sides, 1100 DTEX thick.
- Integrated air berms (air chamber) for containment to hold brown water.
- Fill ports are both compressed air (high pressure) and low pressure inflator/deflator.



DAT® 3060S Shower
3 Line 3/4 stage mass casualty decon shower system

DAT® 6012 (Interior) Shelter
20' W x 40' L x 10' H, 6 windows, 3 sky lights



DAT® 3060 Shelter
11' w x 21' L x 9' H 200 sq. ft.
2 windows, 2 sky lights

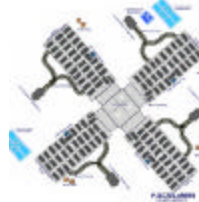


Medical Surge Capacity System



FSI offers a Medical Surge Capacity solution to provide immediate shelters, emergency car supplies, tools and other equipment for life safety and rescue operations during mass casualty events.

FSI Medical Surge Capacity Systems are 10 to 120-bed standalone or interconnected spoke-and-hub design, fully equipped isolation shelter systems for multiple-use, modular, scalable "sufficiency of care" facilities.



Spoke-and-Hub design

MCI Trailer Systems

Fully configurable for Mass Trauma / Mass Casualty / Mass Decon or any combination.

Several styles, sizes, options are available.



Portable Patient Isolation Chamber

Provides safe transportation of victims of radiological, biological or chemical incidents to more advanced medical treatment. Creates a negative airflow when connected to the HEPA Air Filter system, it eliminates cross-contamination and protects health care providers. with PAPR with rechargeable battery and charger, creates flow when connected to optional HEPA air filter system. Comes with 4" re-sealable red colored access ports to allow passage of O2 or Intravenous tubes from outside to patient.



Part #: F-INPIC-2

Mobile Decon Shower Unit

Fully Mobile Self Contained 19' decontamination Mass Casualty Undress/Shower/Redress Trailer with generator, clean and brown water holding tanks, detergent injection system. Provides hot water and electricity in emergency situations where permanent facilities are not available.



F-THD20-20' Trailer System

EMERGENCY RESPONSE



CHEMICAL PROTECTIVE CLOTHING

Tychem® TK

The Highest Level of Protection for Initial Hot-Zone Entry



Tychem TK® 650 Level A

The lime yellow material is highly visible in both bright and dim light, offering greater safety in emergency situations. Tychem® TK is easily seen in smoky or hazy environments, and is ideal for hazardous material handling, domestic preparedness, emergency response and transportation emergency teams. The true sealed window does not fog between film layers providing better vision.

Available in Rear Entry. All deluxe and NFPA 1994 Certified Level NFPA 1994 Certified Class 1, Part #TK644 Front Entry, TK 654 1 A' s are available with a "wide view" lens system.

Tychem® BR

An Effective Choice for Hot-Zone Cleanup and Warm-Zone Operations



Tychem® BR151 Level B Suit

Chemical Protective Clothing backed by superior permeation data on over 200 nasty chemicals, including the ones involved in most industrial or hazmat incidents, as well as chemical and biological WMD. Excellent tear, puncture and abrasion resistance, plus enhanced comfort make these garments a dream to work in. *Also available in Tychem® LV (low visibility military green).*

Also available in NFPA 1994 Certified Class 3 Ensemble, Part # BR780 or LV780

ChemMAX™ 1

Entry Level Chemical Protection



Cost effective chemical protection for plant clean up or chemical handling. ChemMax 1 is constructed with a unique polyethylene barrier film and a continuous filament polypropylene nonwoven, and bars many harmful contaminants from penetrating to inner clothing. *Available with serged, bound and sealed seams.*

ChemMAX™ 2

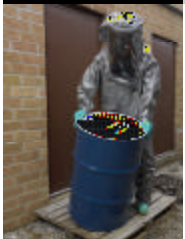
Dow Saranex 23P Barrier Chemical Protection



Provides protection for chemical mixing and handling, environmental clean up, hazardous materials remediation and response, pharmaceutical manufacturing, spray painting and general industry. The unparalleled strength and softness of ChemMax 2 features the Dow Saranex 23P film on two layers of a unique bi-component spunbound non-woven substrate. *Available with sewn and bound seams and heat sealed seams*

ChemMAX™ 3

Multi-Role Chemical Protective Garment



Ideal for industrial cleanup, emergency responders and law enforcement. Durable and lightweight, this provides a barrier against a broad spectrum of toxic industrial chemicals, dual use chemicals, chemical warfare agents and other harmful contaminants. The multi layer film is applied to a heavy polypropylene non-woven for increased strength and durability.

EMERGENCY RESPONSE



Portable Field Hospital Cots

Heavy duty, economy priced portable field hospital cots with flame resistant and fluid resistant mattress pad & IV pole. Cots are long enough to accommodate full sized patients.

Model #F-EM-262A



Gloves for Handling Hazardous Materials

Effective and Economical Chemical-Barrier Glove



Chem-Ply™ MN-440

Unique all-Neoprene construction makes the STANZOIL Chem-Ply the most effective and economical chemical-barrier glove available. Choose from the 22-mil and 30-mil, 14" or 18" versions or 14", 40-mil version to find the best combination of chemical/mechanical resistance and dexterity for your application.

In compliance with NFPA 1992-1994 Ed Hazardous Chemical Emergency Standard.

Fluoroelastomer/Nitrile Chemical Resistant Gloves



Fluonit 468 combines Nitrile layer and several outer layers of Fluoroelastomer to provide extreme hazardous chemical protection.

The Nitrile interior provides the glove with superior mechanical resistance. It has a green Nitrile interior with black Fluoroelastomer outer layers. As the black Fluoroelastomer wears through abrasion the green inner layer will appear, indicating gloves should be replaced.



Triosyn® Respirators with Antimicrobial Protection

Ultimate Respiratory Protection



Designed to stop viruses from getting through to you. These respirators contain a multi-layer system impregnated with the patented Triosyn® resin compound that creates increased microbial attraction by chemical, physical and electrostatic means.

It's tomorrow's technology—today!

Pyreper**Smoke Jumper****Wildland Fire Fighting Gear**

Be better protected and able to perform for any given situation! Garments offer enhanced protection to increase your coverage and minimize exposure, and are designed to enable greater freedom of movement when fighting the unpredictable wildland fire.

Brushcoat and Brushpants available in Nomex® IIIA (93% Nomex, 5% Kevlar®, 2% P140 Carbon Fiber) and Indura Ultra Soft (88% Cotton, 12% High Tenacity Nylon).

Jackets sizes available: Small (38-40) through 2XL (54-56).
Pants sizes available: Waist sizes: S (28-30), M (32-34), L (36-38), XL (40-42), 2XL (44-46). Inseams: 30, 32, or 34. All pants supplied with finished leg bottoms (hook and loop take up tabs on leg bottoms).

Pyreper**Crash / Fire/ Rescue Gear****COMBAT®
COMBAT LITE®**

Combat® Series of aluminized turnout gear combines the quality features of the AttackSeries with a highly reflective aluminized layer. Combat® Lite couples the Sterling Heights design with an aluminized layer for additional protection.

Combat® and Combat Lite® meet or exceed the requirements for crash, fire and rescue from the FAA, International Civil Aviation Organization and the US Military. Additionally, they meet or exceed requirements for marine and offshore use.

**OSX
COMBAT ELITE**

Same as Combat and Combat Lite except it is in stock for immediate delivery. Many standard features and sizes available.



Contact your USA Representative for information on any item in this catalog.

Ph: 800-827-4266 * Fax: 513-231-1456
www.unitedsales.com * assocs@unitedsales.com

Visit our web site to see our other Product Catalogs!

Pyreper**Turnout Gear**

Pyreper™ offers the Attack® MTS and Battalion® MTS customized Turnout Gear and accessories, and OSX Off the Shelf, Ready-to-Go Turnout Gear.

MTS BATTALION STANDARD FEATURES

Your Choice of materials* Standard Features can be upgraded/changed

32" Jacket

"New" Drag Rescue Harness
NFPA Triple Trim
Cargo/Handwarmer Pockets lined with moisture barrier
Radio Pocket on left chest
Leather Cuff Reinforcements
Kevlar Wristlets
Outershell Liner Pocket
Zipper/Velcro Closure
Outershell Reinforced Upper Back
Padded Shoulders in Liner
Hi Back Bib Pants
NFPA Triple Trim
10 x 10 x 2 Bellows Pockets lined with Moisture Barrier
Outershell Double Padded
Knee Reinforcements
Velcro /Snap Fly Closure
Two Take-Up Straps
Leather Cuff Reinforcements

**OSX 2000 STANDARD FEATURES**

Outer shell: **Advance** (Khaki or Black)
Thermal Liner: **Aralite Quilt**
Moisture Barrier: **Stedair 3000**
32" Jacket
"New" Drag Rescue Harness
NFPA L/Y Triple Trim
Cargo/Handwarmer Pockets
Radio Pocket on left chest
Flashlight Snap & Strap on right chest
Outershell Cuff Reinforcements
Kevlar *Hand & Wrist Guards*
Outershell Liner Pocket
Zipper/Velcro Closure
Outershell Reinforced Upper Back
Padded Shoulders in Liner
Hi Back Bib Pants
NFPA L/Y Triple Trim
10 x 10 x 2 Bellows Pockets
Outershell *Single* Padded
Knee Reinforcements
Velcro /Snap Fly Closure
Two Take-Up Straps
Outershell Cuff Reinforcements

***Choice of Materials:**

Nomex, Advance, Advance Ultra, Basofil/Kevlar, PBI Matrix, Millenia
Moisture Barriers:
Stedair 3000, Stedair 4000.
Thermal Liners: Q-8; Aralite, Caldura NP, Caldura SL2, Omni Synergy

**Lakeland
INDUSTRIES, INC****FR Cotton Extrication Suit**

- Stand up collar with hook & loop closure.
- Bi-swing back, hook & loop adjustable straps at wrist.
- 12" leg zipper with hook & loop adjustable straps at ankle.
- Brass zipper front with hook & loop storm flaps.
- Lined Sleeves, padded elbows, forearms, knees & shins, two rear pockets with flaps.
- Side Entry pockets with pass-through hook & loop closures.
- Semi-bellows pocket with flap on each thigh.
- Radio pocket with flap, utility strap & mic clip above the pocket.
- Hook & loop take-up straps at waist.
- Large pocket on right chest with utility loop, scissor pocket w/strap.
- Reflective trim around upper sleeves, lower legs and across upper back



Available in Royal Blue and Navy Blue

FIRE AND RESCUE * FIRE AND RESCUE



2-Piece Extrication Suit

9.5 oz FR Cotton or 6 oz Nomex IIIA

Jacket

- 2 ply Lay down collar w/ adjustable throat strap
- Non-sparking brass zipper front closure
- Hook & Loop Storm Fly Front Closure
- Hang-up Loop in Collar
- Radio pocket w/flap closure
- 2" FR Refl. Trim Package
- Many more features!
- Sizes: S-7XL



Pants

- 3" elastic waist band
- XL Belt loops
- Snap closure at waist
- Non-sparking Zipper Fly
- EMS Pocket
- 2 ply padded reinforced knees & shins
- 16" zippered boot openings
- Adjustable Hook & Loop Pant Cuffs
- Many more features!
- Sizes S-6XL

Colors: Available in Navy Red, Tan, Royal, Yellow, Orange



Reflective Gear Designed for Firefighters

- Open Side Fire Police Vest
- Solid front / mesh back—the cooler alternative.
- Badge and mic tab
- Radio pocket with closure
- Zipper front closure
- Adjustable hook & loop sides
- Silver reflective trim on 4.5" Gro-grain.
- Reflective "Fire Police" on back
- Sizes: M-5XL
- Colors: Lime/Yellow or Orange



Part #V3AM-OSFP



Incident Command Vests

**Open Side Incident Command Vest Set
Over 100 Stock Panel Legends Available
Non-Stock Legends Also Available**

- Set of 6, Complete with carrying bag
- Zipper front closure, adjustable hook & Loop sides
- 2 inside pockets
- Cell phone pocket on right chest
- Silver reflective trim on 3" Gro Grain
- 4" x 18" Reflective panel on back
- Sizes: Up to 5X
- Colors: Lime/Yellow, Red, Orange, Royal, White or Yellow.



Part #V-IC-OS



11,000 lb Anchor Point rated Tripod with optional Cantilever Rescue System

Constructed of lightweight tubular aluminum with a rugged steel head assembly, it can be combined with up to three pulleys to accommodate a variety of winches and fall-arrest devices to meet a wide range of confined space entry/retrieval and rescue requirements.



Part #13159



Cantilever Rescue System Kit easily converts this tripod into a versatile piece of equipment for confined space entry/retrieval and high angle rescue operations over roof edges, parapets, guardrails, and bridges.

Part #12297



Ascending and Descending Rope Rescue System

Rollgliss® ascending and descending rope systems are market leaders, in use all over the world with fire departments, in industry, in public services, by rescue teams as well as by arm and police forces.



- Interchangeable pulley system with a 3:1 ratio with 50 ft. travel distance (200 ft. 3/8" rope), any length available.
- Includes R350 rope unit, pulleys, rope control device, securing strap, anchoring sling, carabiners and carrying bag.

Part #8902004

EMS / POLICE * EMS / POLICE



Disposable Backboards



FSI # F-EM-4

- Fluid Resistant.
- Adult and Pediatric sizes available in different configurations (with or without straps, autocradles, C Collar, etc).
- Easy to use—pull zip tabs and in 30 seconds backboard is fully configured and ready for use.
- Specially coated structural cardboard can hold 500+ pounds of body weight.
- Packaged in boxes of 5 and take up little space since they are stored flat.
- Significantly lower in cost than other backboards and more cost effective than permanent backboards in the event of a true mass casualty incident. Cost Efficient.



Disposable 4-mil Nitrile Exam Gloves

- Powder free, contains no natural rubber latex proteins.
- Reduces chances of dermatitis and potential to confuse powder with hazardous substances and residues.
- Meets ASTM F1671 Resistance to Blood Borne Pathogens.
- Textured fingertips provide safe wet or dry grip.
- Rolled cuff decreases potential of tearing during donning the gloves.
- Sizes: XS—XL



SOLO ULTRA™/997

ACCESSORIES * ACCESSORIES * ACCESSORIES * ACCESSORIES



Fold & Roll™ Sign System

Can be rapidly deployed in less than 2 minutes by one person.

- NCHRP 350 compatibility, MUTCD compliant.
- Aluminum and steel construction.
- Coral Pink super bright material.
- 48" Fold and Roll™ and Dynaflex™ signs with quick-locking Stablock™ sign holding system.
- Many standard legends, others available by special order.
- Telescoping aluminum legs with two position height adjustment and anti-skid foot pads.
- Kick release system for quick leg deployment.
- Dual torsion springs to withstand wind resistance.



**COOL VEST!
Get Comfortable with a Phase Change Cool Vest®**

Working in HazMat/Protective suits can make anyone lose their cool. The Phase Change Cool Vests® worn under these suits give the user a greater degree of comfort. In fact, it creates a climate of 58° F for up to three hours. Designed for comfort, these vests are washable and lightweight. Built-in side and shoulder adjustments provide a better fit. The vests come in many styles, sizes and fabrics.



Available in Polycotton, Banox (FR Cotton), or Nomex®

Style #00055 Poly cotton
Style #00056 Banox (FR) Cotton
Style #00058 Nomex



Specialty Vests

**Incident Management
Disaster Preparedness**

Constructed of heavy duty vinyl coated fluorescent knit fabric. 4" x 18" reflective patches on front and back. Many standard legends available, or build your own!



Level A / NFPA Test Kit

Maintain your encapsulated suits with this easy to use test kit. Kit features an easy to read Magnehelic pressure gauge, digital timer, sturdy brass and steel fittings, hoses and connectors in a waterproof case. Complete instructions included.



Gator® Overpack Salvage Drum

**Ideal for Overpacking
damaged drums for transport**

95-gallon Overpack Salvage Drum is the safe and economical solution to the transportation and temporary storage of damaged or leaking drums of hazardous materials. Rugged, UV-protected polyethylene withstands the rigors of land, air and sea transportation. "X" rating offers the highest UN and D.O.T. certification available. Can be used with all packing classes of hazardous materials, I, II and III including solvents, acids, poisons and explosives.



Justrite Part #28201

100% polyethylene construction provides superior chemical resistance and durability for a variety of uses such as collection and transport, emergency response, contamination site cleanup, and spill control kits.



Leather Gloves

MechPro Grip. Pigskin premium grain leather. Reinforced padded palm patch for grip and extra wear. Reinforced leather thumb, fingertips and knuckle strap. Hook and loop closure. Sizes M-XL. Part #7790.



Grain Cowhide. Key stone thumb, bound hem. Elastic shirred back. Sizes S-XL. Part #Y0131



Leather Palm—Standard shoulder split palm. Wing thumb, full feature. Safety Cuff. Sizes S, L. Part #Y3407



UNO™ D.O.T. Safety Cans

Transport fuel safety with UNO D.O.T. Safety Cans

Satisfy both D.O.T. and FM requirements for over-the-road transport and the dispensing of fuel once you reach the work site. Optimum protection from fire risks combined with innovative ease-of-use features provide safety and efficiency.



Available in 1, 2½, and 5 gallon cans



Goggles for Wildland Firefighting



- Does not melt, drip or ignite at 350° for 5 minutes.
- Meets ANSI Z87.1+ standards.
- Side vents to increase airflow
- Fits naturally to contour of face blocking out contaminants.
- Available in IRUV 3.0 & 5.0 for cutting and grinding.



ACCESSORIES

*

ACCESSORIES

*

ACCESSORIES



Products for your Spill Related Needs



STAR DUST Super Absorbent

- Absorbs Spills of any type liquid or semi-liquid.
- Absorbs Spills on contact – works immediately.
- Leaves no history of there having been a spill providing a safe, dry work, residue free work surface immediately.

STAR POWER Super Cleaner Degreaser

- Water Based.
- Environmentally Friendly Super Cleaner and Degreaser.
- Starpower is a multipurpose/universal safe and easy to use cleaner and degreaser with a multitude of uses. Can be used in plants, on machinery, in food processing, pressure washers, parts washers, floor scrubbers to save time, cost and improve performance and efficiency.



Triage Tape System

FSI Triage 4 Tape System

Green, Yellow, Red, Black Tape with Carry Bag



Part # F-EM-19

Identifies Injury Severity

Black Tape: Morgue, pulseless/non-breathing.
 Red Tape: Immediate, life threatening injuries.
 Yellow Tape: Delayed serious, non-life threatening.
 Green Tape: Minor injuries, walking wounded.



Pompier Body Belt

Developed in cooperation with Firefighters, this is the lightest weight belt on the market, with no sacrifice to safety.

- Swiveling Hook makes it easy to operate even with gloves on
- Tongue Buckle
- Extra wide body pad provides increased support and comfort
- Sizes XS - XL
- NFPA Approved



DBI #1000564



Air Heating Units

Air Heating System for FSI Shelters

- 136,000 BTU.
- 110 V diesel fuel powered.
- 12" x 25' ducting.
- Built-in 10 gal fuel tank



FSI #F-HST



Conveyor Roller System

- Adjustable from 2-8 ft
- 3 legs set/unit
- 7 wheels/axle
- 200 lbs./ft capacity
- Priced per section



FSI #F-RS

Also available:
 F-RS12: adjustable 3-12 ft, 4 leg sets/unit
 F-RS16: adjustable from 4' 3" -16' 9", 5 leg sets/unit



Smokers Cease-Fire Cigarette Butt Receptacle

Self Extinguishing!

- Made of flame-retardant, sturdy poly ethylene, it won't rust, dent, or crack
- Unique rain bonnet opening keeps rain out and discourages other trash.
- Simply lift off lid to empty big galvanized steel pail inside.
- Tie-down notches offer security and greater stability under severe weather conditions.
- Available in seven colors.



Professional Drug Identification Kit

Most Accurate, Easy To Use Detection Kit On The Professional Market

- Virtually No False Positives*
- Easy to use
 - Environmentally Safe Disposal
 - Detects Trace Amounts
 - Unique Design
 - Utilizes Advanced New Patented Kit Design and Chemical Technology
 - Results in Seconds!



This Catalog is a representation of the many Public Safety Products offered by our manufacturers. Please contact your United Sales Associates Representative for additional information or any questions.

For More Information Call: 1-800-837-4266